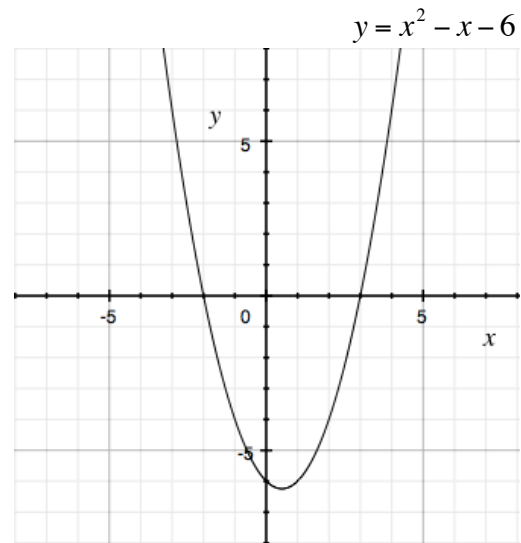


Number:

Textbook Section:

Title:

1. Use the graph to solve the inequality $x^2 - x - 6 > 0$.



2. Use the graph to solve the inequality $x^2 - x - 6 \leq 0$.

For #3-5, solve the inequality. Give your answer in interval notation.

3. $p^2 + 5p + 4 < 0$

4. a) $6t \leq t^2 + 25$

b) $t^2 - 6t + 25 < 0$

5. $x^2 - 4x \geq -1$

6. Find the domain of $f(x) = \sqrt{x^2 - 2x - 15}$.